

# Optimat ABD 150 | 250

**Horizontal drilling, gluing and dowelling with one machine**

## Highlights:

- **CNC-Axes in Y- and Z-direction**  
For automatic adjustment of diverse workpiece thicknesses, drilling depths and distances to the workpiece edge
- Addition to the processing center or stand-alone solution
- No prescribed drilling or dowelling patterns
- Simple and rapid material handling
- No set-up times
- Easy software programming with woodWOP



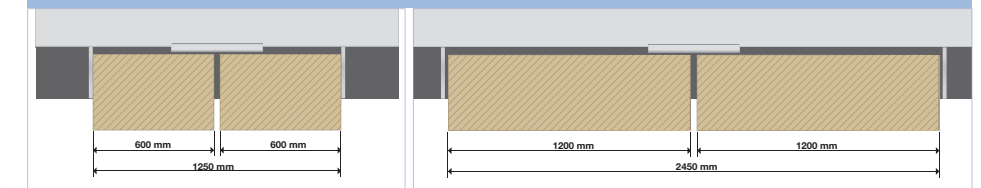
Optimat ABD 150



Optimat ABD 250

## Optimat ABD 150 | 250

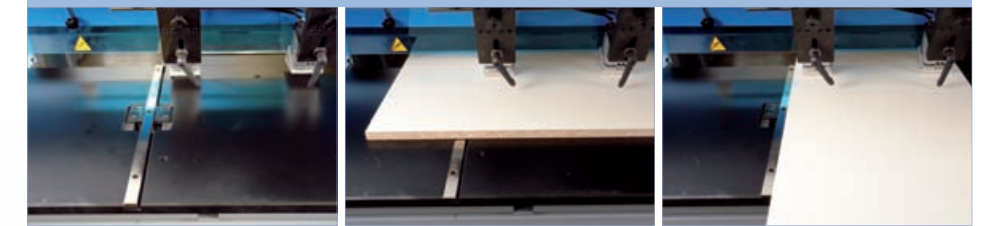
### Alternate operation



Optimat ABD 150

Optimat ABD 250

### Center stop



- pneumatically lowerable
- manual control by (selection) switch

### Barcode interface (option)



- Barcodescanner / -software

### power control with UPS



- TFT-Display
- CD-RW device
- Modem
- USB frontside bus
- UPS - protects the computer against damages in case of mains interruption

### Pull-out keyboard



### 3 horizontal drilling spindles and doweling aggregate



- For precise processing while drilling and dowelling horizontally
- Individually selectable drilling spindles with 32 mm pitch

### Dowelling tool with glue application

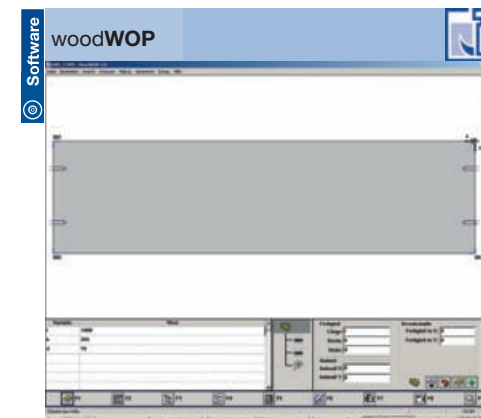


- Glue injector with adjustable glue amount
- Glue flow control
- 32 mm distance from the first drilling spindle

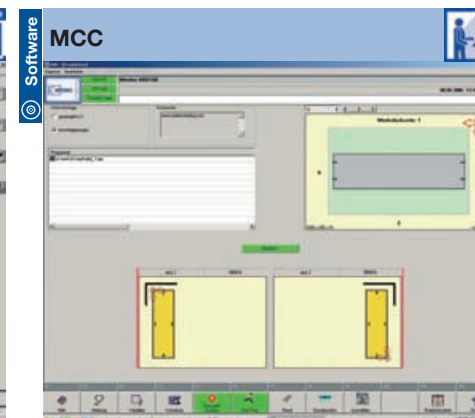
### 3 vertical drilling spindles (option)



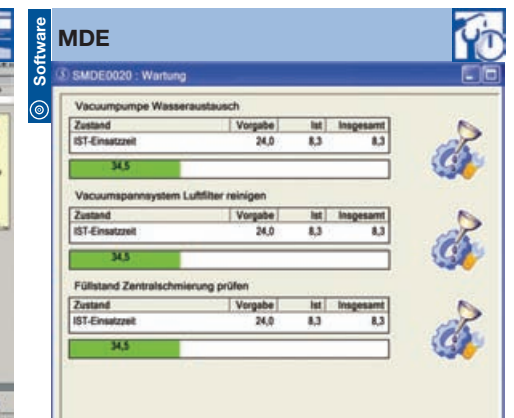
- Individually selectable drilling spindles with 32 mm pitch for diverse drill diameters up to Ø 35 mm



- Modern software based on Windows®
- More than 15.000 installations worldwide



- Modern and simple control of main machine functions through soft keys
- Graphical loading

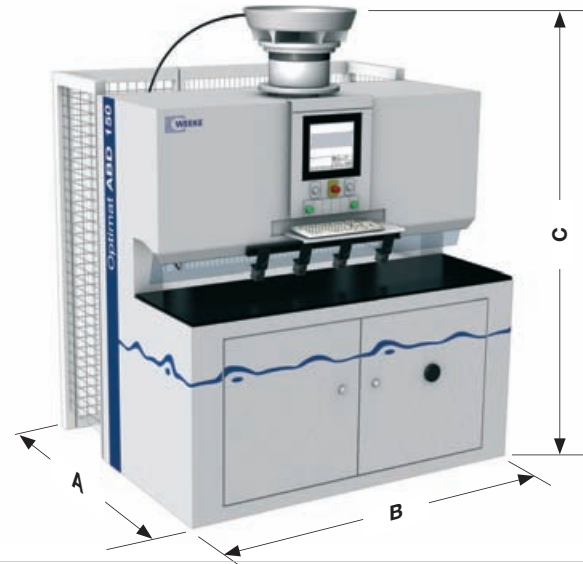


- Machine Data Recording - collecting and evaluating machine states via time meter and event meter

Pictures may also show options



## Setting up dimensions



Dimensions	ABD 150	ABD 250
A	1540 mm	1540 mm
B	2250 mm	3500 mm
C	2285 mm	2285 mm

## Handling example



## Technical Data

Workpiece dimensions	ABD 150	ABD 250
Length/Width/Thickness (min) mm	20/50/10	20/50/10
Length/Width/Thickness (max) mm	1250/800/60	2500/800/60
Compressed air connection inch	R 1/2"	R 1/2"
Compressed air supply bar	min. 7	min. 7
Total connected voltage kW	appr. 9,7	appr. 9,7
Extractor connection mm	1 x D 80	1 x D 80
Extraction speed m/sec.	min. 30	min. 30
Supply voltage A	25	25
Total machine weight kgs	appr. 1600	appr. 2200

## You may contact us - WORLDWIDE



- Teleservice possibility via basic internet-connection (TSN-possibility)
- Competent spare parts service
- Weeke Communication: Up-to-date information at all times: [www.weeke.com](http://www.weeke.com)
- Any questions, new ideas, criticism & praise to: [info@weeke.de](mailto:info@weeke.de)

## contact



**WEEKE Bohrsysteme GmbH**  
Benzstraße 10-16  
33442 HERZEBROCK-CLARHOLZ  
GERMANY  
Tel.: +49 5245 445-0  
Fax: +49 5245 445-139  
[info@weeke.de](mailto:info@weeke.de) - [www.weeke.de](http://www.weeke.de)

NOTE: Equipment as described in this brochure is subject to technical changes and further developments. Some photos show options which are not included in the standard machine configuration. Technical data refer to standard equipment and are not binding for the order.

# Optimat ABD 150 | 250 CNC-Drilling and Dowel Inserting Machine

