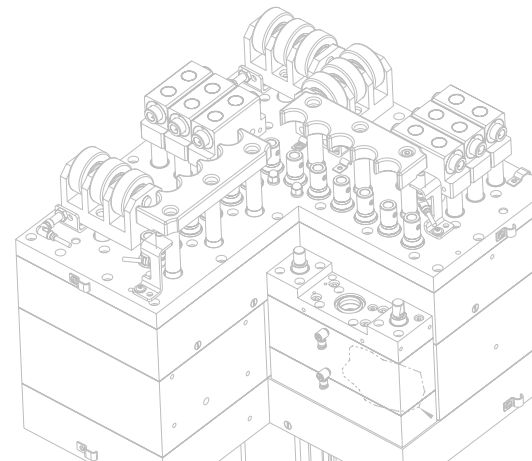
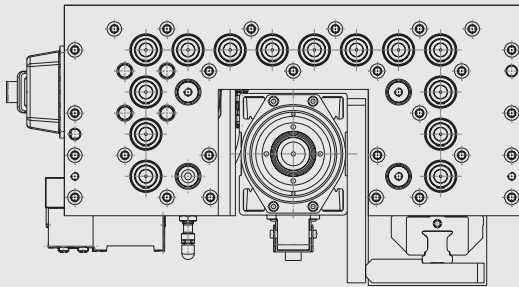
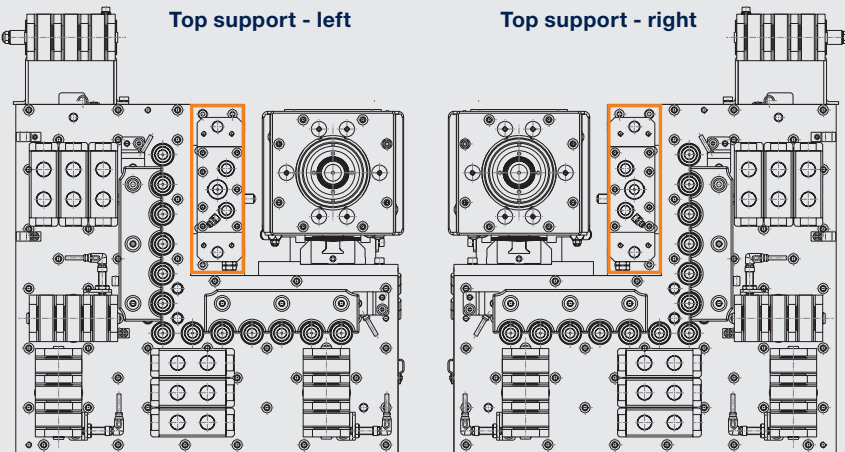


Bottom support



Top support - left

Top support - right



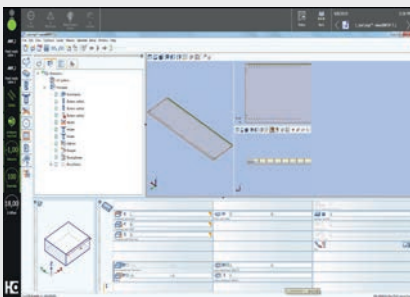
64

Configuration 64-spindles

- 2 x 13 upper vertical drilling spindles
- 1 x 14 lower vertical drilling spindles
- 2 x 12 horizontal drilling spindles
- 2 x Higer D (optional)
- 3 x 3,5 kW routing spindle

All inclusive – Software

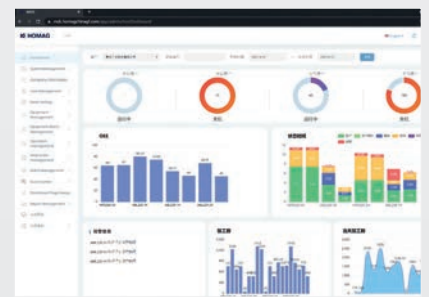
WITH THIS SOFTWARE PACKAGE YOU ARE »READY TO RACE«. You will receive one of the most established CNC-programming systems, the woodWOP software, which has proven itself by more than 30.000 installations worldwide.



woodWOP | License Machine

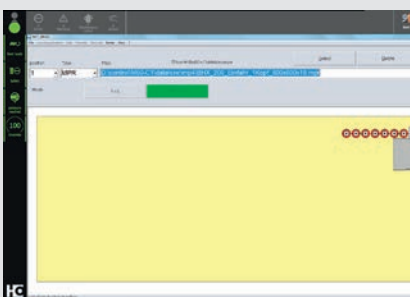
- Fast and intuitive operation thanks to simple, direct navigation
- Quickly create individual subprograms
- Increased programming security through 3D images of workpieces, processing and clamping equipment

Please use our website!
 Worldwide largest forum for woodWOP:
forum.homag.com



PulseCloud ready

Do you need support with Dashboard, Machine management, Tool management or Simple preventive maintenance? We know it and are at your side. MMR Basic provides a direct connection to the PulseCloud. Data is provided at a glance. Your fast support is guaranteed.



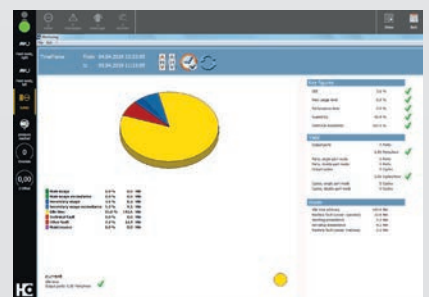
Slot assignment

- Simple control of main machine functions through soft keys
- Graphical configuration
- Automatic mirroring of workpieces



woodWOP DXF Basic

- Interface for CAD-Data Import
- Basis to generate woodWOP programs



Machine data acquisition MMR Basic

- Record quantities and actual operating times on the machine
- Integrated maintenance instructions for optimum time and quantity-based planning, as well as performing maintenance

Technical data

TECHNICAL DATA

Footprint without Switch Cabinet

L	mm	5.910
W	mm	3.900
H	mm	2.530

Workpiece dimension

Lenght	mm	250 – 2.500 (3.050)
Width (single part)	mm	60 – 1.250
Width (double parts)	mm	2 x 620
Hight	mm	8 – 40

Drilling Head TOP 1 & 2

vertical spindles	No.	2 x 13
vertical spindle clamping	patented	Yes
horizontal spindles in X+/X-	No.	2 x (3X+/3X-)
horizontal spindles in Y+/Y-	No.	2 x (3Y+/3Y-)
Frequency controlled	RPM	1.250 – 7.500

Drilling Head Bottom 1

vertical spindles	No.	14
vertical spindle clamping	patented	Yes
Frequency controlled	RPM	1.250 – 7.500

Router

Frequency controlled	RPM	18.000
Power	KW	3.5
Collet	Type	ER25

Infeed table

Type		Air-cushion table
Direction	Throughfeed	
Direction	Reserved	

Outfeed table

Type		Support table
-------------	--	---------------

Dust extraction

Diameter	mm	2 x 160
-----------------	----	---------

Electric

max. connection load	KW	33
-----------------------------	----	----

Air

Compressed Air	bar	7
-----------------------	-----	---

Machine

approx. weight	KG	4.800
-----------------------	----	-------

